



BUSHLAND NEWS

*KATANDRA BUSHLAND SANCTUARY NEWSLETTER
Summer 2026*

New Year's greetings from Katandra

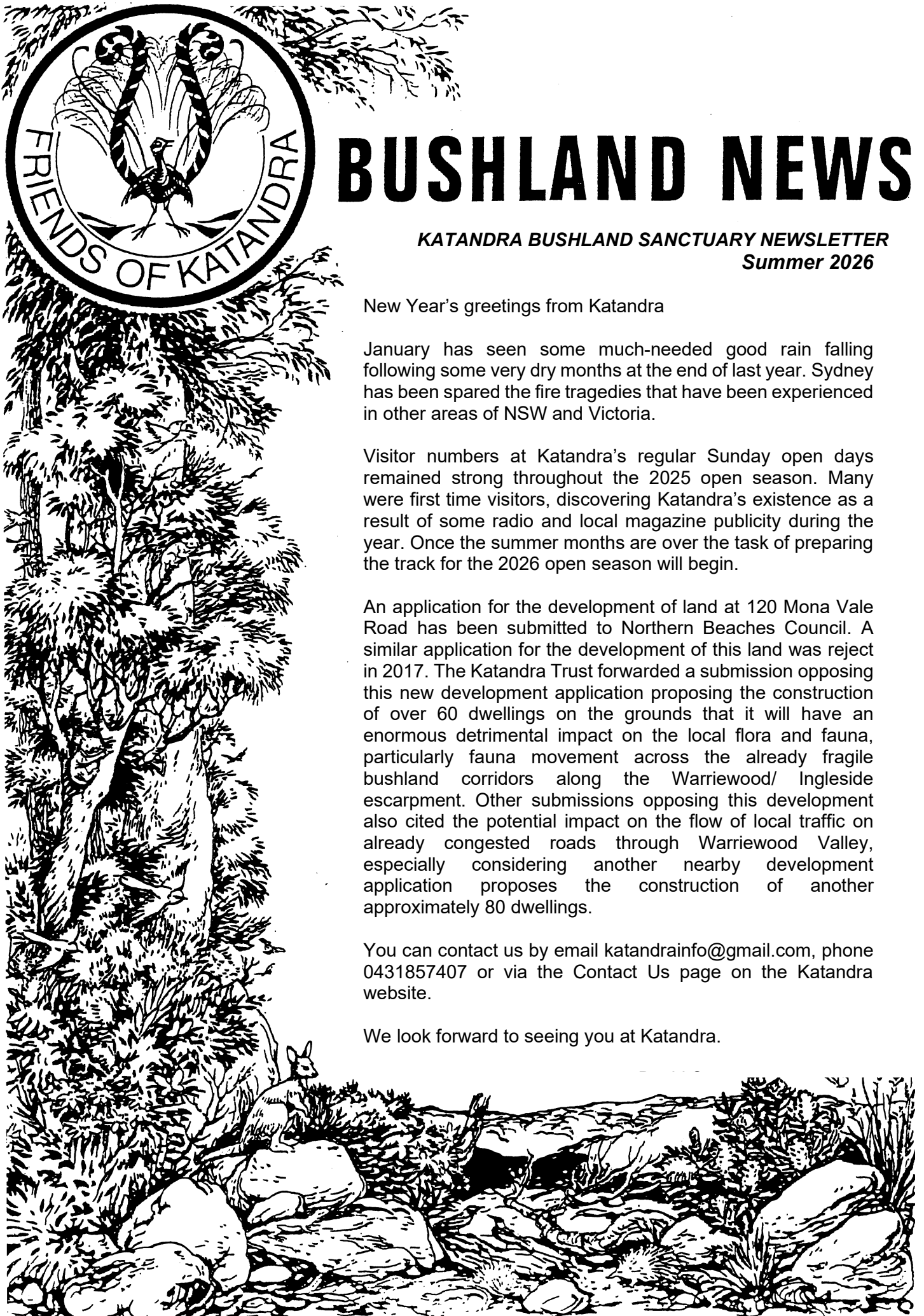
January has seen some much-needed good rain falling following some very dry months at the end of last year. Sydney has been spared the fire tragedies that have been experienced in other areas of NSW and Victoria.

Visitor numbers at Katandra's regular Sunday open days remained strong throughout the 2025 open season. Many were first time visitors, discovering Katandra's existence as a result of some radio and local magazine publicity during the year. Once the summer months are over the task of preparing the track for the 2026 open season will begin.

An application for the development of land at 120 Mona Vale Road has been submitted to Northern Beaches Council. A similar application for the development of this land was reject in 2017. The Katandra Trust forwarded a submission opposing this new development application proposing the construction of over 60 dwellings on the grounds that it will have an enormous detrimental impact on the local flora and fauna, particularly fauna movement across the already fragile bushland corridors along the Warriewood/ Ingleside escarpment. Other submissions opposing this development also cited the potential impact on the flow of local traffic on already congested roads through Warriewood Valley, especially considering another nearby development application proposes the construction of another approximately 80 dwellings.

You can contact us by email katandrainfo@gmail.com, phone 0431857407 or via the Contact Us page on the Katandra website.

We look forward to seeing you at Katandra.



The Cunoniaceae plants of Katandra

Within the rainforest gullies of the Katandra Bushland Sanctuary there are 4 plants that belong to the Cunoniaceae family. These are the NSW Christmas Bush (*Ceratopetalum gummiferum*), Coachwood (*Ceratopetalum apetalum*), Crab Apple (*Schizomeria ovata*) and Black Wattle (*Callicoma serratifolia*).

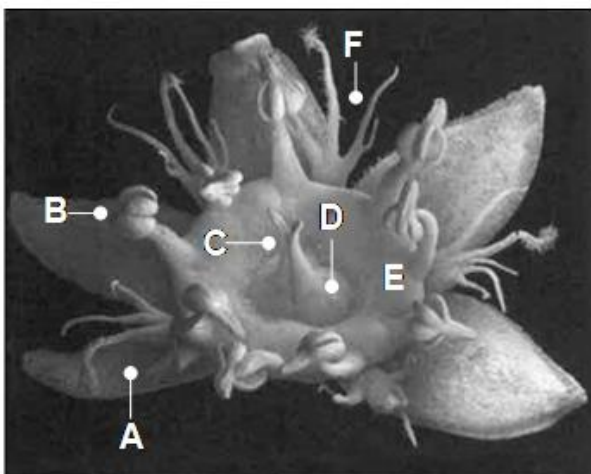
The flowers of the Cunoniaceae plants of Katandra show key similarities, as follows:

- 4 – 5 sepals
- 4 – 5 petals that are smaller than the sepals or else entirely absent
- Stamens that are longer than and twice as numerous than the sepals
- Stamens that are arranged around the perimeter of a nectiferous disk
- Usually a superior / semi inferior ovary

NSW Christmas Bush (*Ceratopetalum gummiferum*)

NSW Christmas Bush is probably the most well known species of Cunoniaceae. A beautiful specimen is located within the sanctuary just before the footbridge crosses Katandra Creek. This tree is about 10 metres tall and is growing as part of the canopy within the rainforest that follows the creekline.

NSW Christmas Bush flowers appear in November. It is the only existing species within the *Ceratopetalum* genus that has flowers with petals.



- A 5 Sepals, turning red after pollination
- B 10 Stamens, with hairs on filaments
- C Deflexed stigma
- D Semi-inferior ovary
- E Nectary disk without hairs
- F 5 Petals (smaller than sepals), white, forked

Figure 1: NSW Christmas Bush flower
(From Rozefelds & Barnes, 2002)

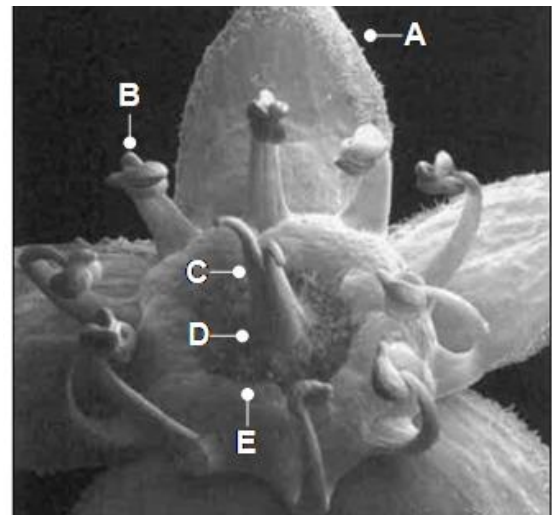


Figure 2: NSW Christmas Bush flower
(Photo by Gillian Guttridge)

Coachwood (*Ceratopetalum apetalum*)

Coachwood is also another well-known species from the Cunoniaceae family, being an impressive tree with a shaft like trunk. A small grove of mature trees can be found in the sanctuary where the footbridge crosses Katandra Creek.

Coachwood flowers are similar to those of NSW Christmas Bush, with the exception that the petals are entirely absent.



- A 5 Sepals, turning red after pollination
- B 10 Stamens
- C Deflexed stigma
- D Semi-inferior ovary
- E Nectary disk covered with hairs
- Petals entirely absent

Figure 3: Coachwood flower
(From Rozefelds & Barnes, 2002)

Crab Apple (*Schizomeria ovata*)

Crab Apple is widespread within rainforests in NSW and southern Queensland but is uncommon in the Northern Beaches area. A single mature tree is located in the sanctuary at the bottom of the first creek (near area 14 on the Katandra map). Crab Apple produces clusters of small, fragrant, white flowers from September to November.



Figure 4: Coachwood flower
(Photo by Gillian Gutridge)

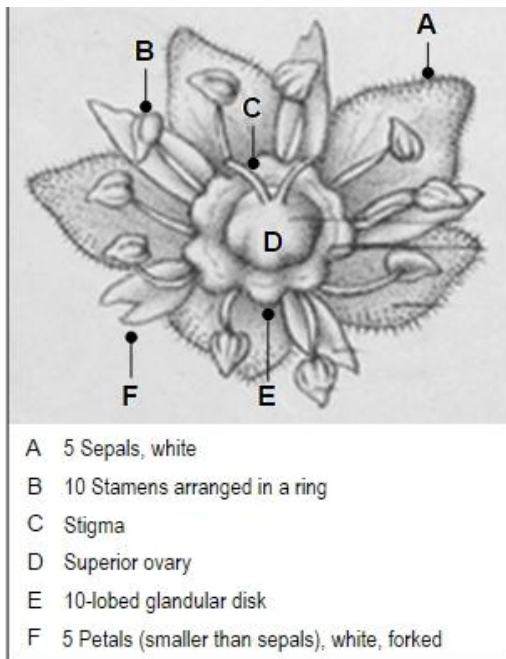


Figure 5: Crab Apple flower (From botanical illustration, Sydney Botanic Gardens, 1914)



Figure 6: Crab Apple flower
(Photo by Gillian Gutridge)

Black Wattle (*Callicoma serratifolia*)

With its pale yellow fluffy blossoms, shiny serrated leaves and bronze, fuzzy new growth, this is a truly beautiful shrub.

Black Wattle can be found within Katandra where the track crosses the first creek, growing on the upstream side of the little footbridge.

The globular flower heads are composed of multiple individual flowers. The flower heads appear from September to October. Black Wattle is the sole species within the *Callicoma* genus. The closest living relatives to Black Wattle are those of the *Codia* genus, which are endemic to New Calidonia.



Figure 7: Black Wattle (*Callicoma serratifolia*)
(Photo by Gillian Gutridge)

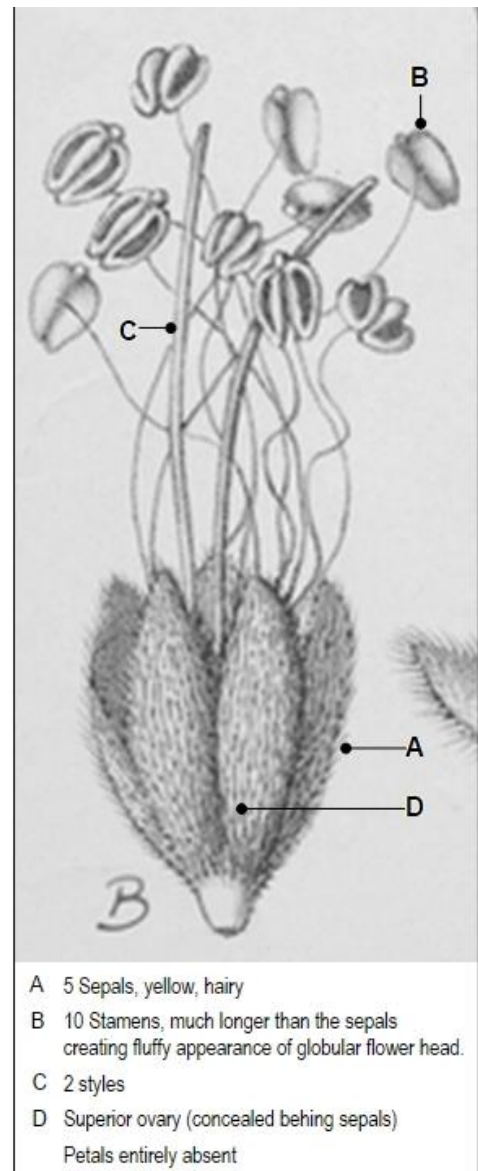


Figure 8: Black Wattle (*Callicoma serratifolia*) (From botanical illustration, Sydney Botanic Gardens, 1915).

KATANDRA BUSHLAND SANCTUARY

Foley's Hill, Lane Cove Rd, Ingleside NSW
Department of Lands Reserve No 86487
Founder: the late Harold Alfred Seymour
Managed by Katandra Bushland Sanctuary Trust.
Phone: 0431857407

OPEN: Every Sunday: July, August, September,
October

HOURS: 10 am — 4 pm

ADMISSION: \$5 donation

KATANDRA BUSHLAND SANCTUARY TRUST PO Box 485 Mona Vale NSW 1660

President: David Seymour

Vice-President; Marita Macrae

Treasurer: Peter Hammond

Trustees: Marita Macrae OAM

Antony Westwood

Myles Holloway

Bushland News Editors: Marita Macrae OAM

David Seymour

(Cover Design by the late Walter Cunningham)

**Enquiries: phone – 0431 857 407,
email - katandrainfo@gmail.com
or via the Contact Us page on the Katandra
website**

Katandra website -
katandrabushlandsanctuary.com

DONATIONS

Donations to Katandra to help maintain the
Sanctuary can be made by direct deposit.
Katandra's bank details are below

Account Name –
Katandra Bushland Sanctuary Trust
BSB – 082132
Account No. - 509347998

PUBLIC OPEN DAYS 2026

Each Sunday of July–October
10 am – 4 pm

Picnic tables are available for use should you wish
to bring along a picnic lunch to enjoy in the
Sanctuary.

DIARY DATES 2026

SANCTUARY MAINTENANCE 2026

Maintenance days are generally the third Sunday
of the month from March to November, from 9am.
Please check by contacting us on 0431 857 407
as these dates and times may vary.

Volunteers are needed

If you can assist on maintenance days or with
welcoming visitors to Katandra on open days,
please phone 0431 857 407.

Katandra Bushland Sanctuary Trust
PO Box 485 Mona Vale NSW 1660

Friends of Katandra

PO Box 365 Mona Vale NSW 1660



I / We,
(full name)

of
(address including postcode) (phone)

Email : (please print clearly).....

- would like to join the Friends of Katandra mail list and receive copies of the Bushland News quarterly newsletter
- would like to make a donation to assist in caring for the sanctuary. I enclose a cheque / money order made payable to the Katandra Bushland Sanctuary Trust for
 - \$10.00
 - \$15.00
 - other (please specify).....

Alternatively donations can be made by direct deposit into the Katandra Bushland Sanctuary Trust account BSB 082132 Account No. 509347998

Signature..... Date.....